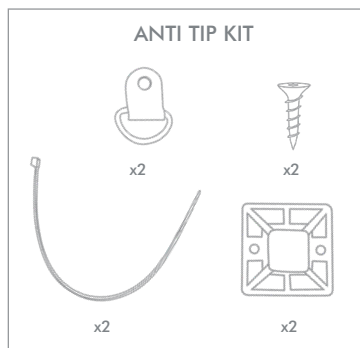
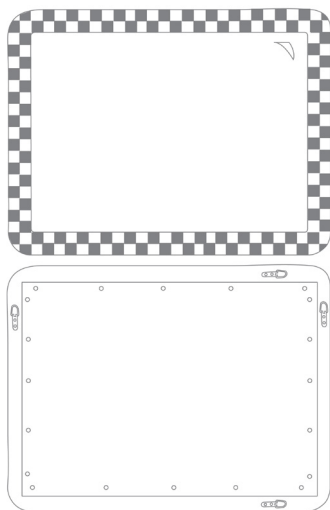


# OLIVER BONAS

## CHEQUERBOARD OVER MANTLE WALL MIRROR



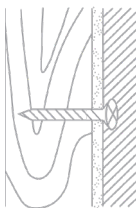
Please use the anti-tip kit provided.

Metal D-ring must be screwed into the back of the wooden frame and not into the MDF.  
Do not hang mirror by the anti-tip kit.

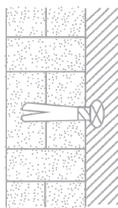
Wall Fixings are not provided.

Wall fixing must be selected according to the type of wall and the weight of item to be hung. We recommend seeking professional advice before selecting fixings.

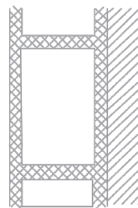
Check the mirror periodically to ensure fittings are secure.



Wood



Brick



Cavity  
(Special fitting needed)

# OLIVER BONAS

## CHEQUERBOARD OVER MANTLE WALL MIRROR

### MIRROR INFORMATION

We hope you love your purchase, however if you are not completely happy please retain your packaging to ensure its safe return.

Not suitable for bathrooms or damp environments.

Not suitable for outdoor use.

Not suitable for children's rooms.

### CLEANING INSTRUCTIONS

When cleaning the glass, use a damp cloth or a recognised glass cleaning product.  
Avoid abrasive cleaners.

Please retain these instructions for future reference.